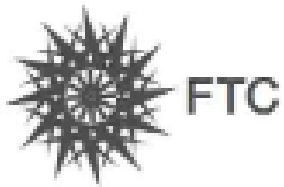




FEVERTREECONSULTING

(incorporating Injula Insights)

Company Profile



FeverTree Consulting is a premier African, 'High Value Add' management consulting company with extensive international experience

COMPANY

- *Founded in 2007, FTC is a 100% African-owned company*
- *Level 1 BBBEE Contributor*

CAPABILITIES

- *FTC understands Africa and works on the things that really matter today*
 - *Strategy (Market, Business, Growth)*
 - *Operations Improvement*
 - *Organisational Effectiveness*

PRACTICES/SECTORS

- *Our primary industry practices are focused on, but not restricted to:*
 - *Government*
 - *Heavy Industry and Mining (including FMCG)*
 - *Consumer/ Financial Services*

APPROACH

- *FTC's approach is results-focused and rooted in a firm commitment to client partnerships*
- *Skills transfer and the development of client capabilities is fundamental to our approach*
- *FTC believes results are only valuable when they are produced sustainably*

INTERNATIONALLY AFRICAN

- *Operated out of Johannesburg, FTC has a team of 30 consultants, working in South Africa and Internationally. FTC is committed to best practice in international consulting*
- *FTC is represented by over 15 nationalities with experience from the likes of McKinsey, AT Kearney and Partners in Performance*

WHY FTC CONSULTING?

It is our vision to be a prominent African management consulting firm renowned for excellence, practical solutions and hands on implementation; partnering with our clients to deliver tangible and sustainable results on every project we undertake.

Our
Vision.

Our
Values.

- *African Ownership and Local Knowledge*
- *International Standards*
- *Lasting Client Partnerships*
- *Hands-on Implementation*
- *Growing and Supporting our People*
- *Doing Good*

ABOUT FEVERTREECONSULTING



FeverTree Consulting brings with it a wealth of experience and an impressive list of successful projects and satisfied clients. Our consultants have worked on some of the largest public and private sector projects in the world.



Industry Focus

- Public Sector/Government
- Resources and Heavy Industry
- Financial Services
- Africa – Emerging Markets

Service Focus

- Strategy Development
- Operations Improvement
- Organisational Effectiveness
- Market and Demand Analysis
- BEE Advisory

Selected Project Credentials

Public Sector/Government

- Turned a dysfunctional government department into a modern, professional and streamlined organisation

Life Insurance and Wealth Management Company

- Assisted in assessing the IT environment and defined the opportunities to enable business to extract further value from IT and worked with the organisation for implementation thereof

Africa – Emerging Markets

- Prioritise sectors for immediate investment in a developing African economy to drive an effective FDI strategy, and actively promote these assets to the international and regional investment community

Global Resource Company

- Built a sustainable Business Improvement capability for a large minerals processor including all the supporting systems, processes and tools

Franchised Bottling Operation

- Undertook a comprehensive review of its market, business and operational strategy, including an assessment of the organisation's ability to implement the strategic recommendations

International Cellular Telecoms Operator

- Assisted in growing market share by increasing retail footprint in targeted areas, developing a new franchise model and enhancing back office systems

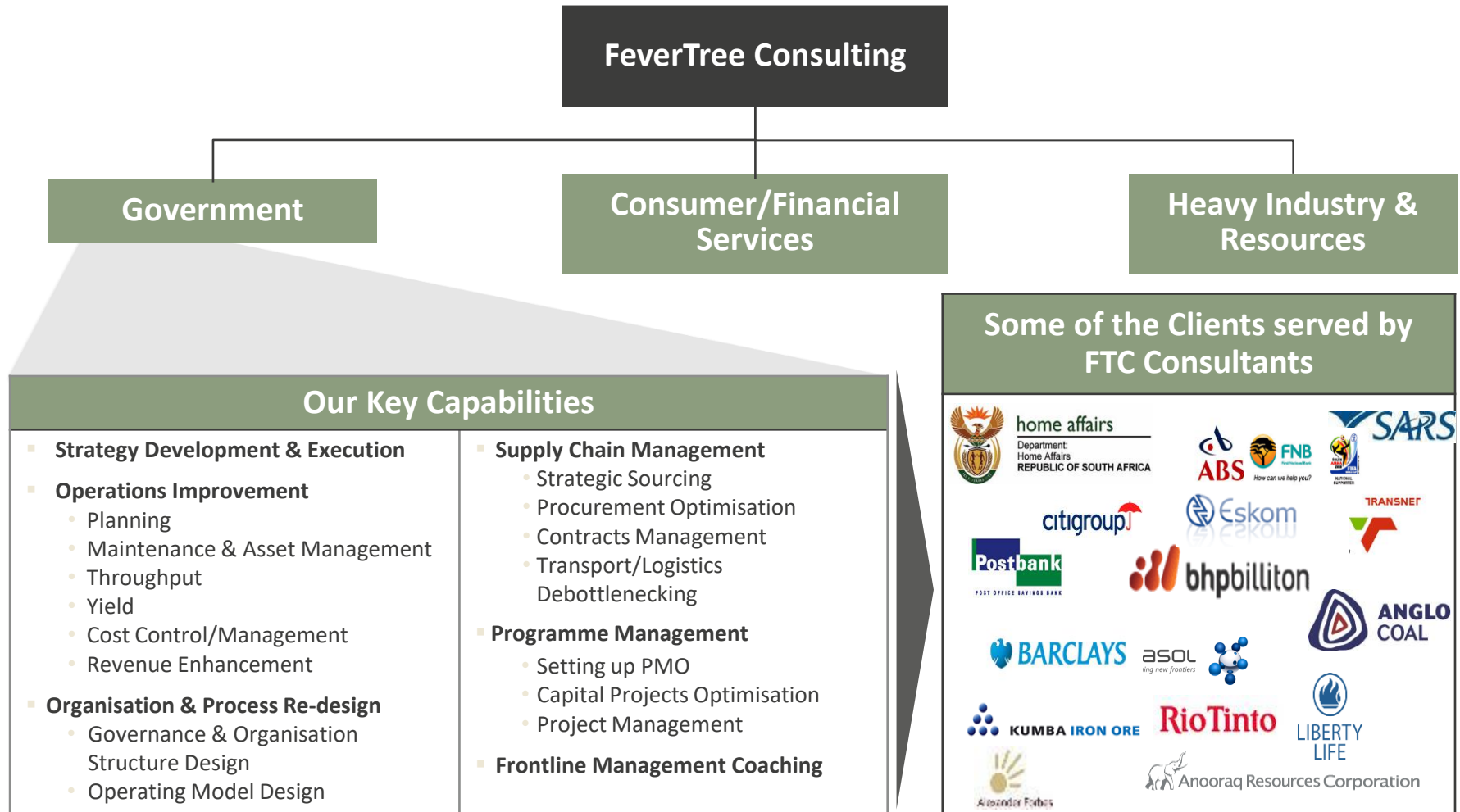
A successful engagement track record with blue-chip clients

Selected Clients

The image displays a collection of logos for various clients, arranged in a grid-like fashion. The logos include:

- ABSA**: Today, tomorrow, together.
- MTN**
- SASOL**: reaching new frontiers
- home affairs**: Department: Home Affairs, REPUBLIC OF SOUTH AFRICA
- SABC**
- rural development & land reform**: Department: Rural Development and Land Reform, REPUBLIC OF SOUTH AFRICA
- Murray & Roberts**
- Neotel**
- AIR LIQUIDE**
- Standard Bank**
- IFIC**: International Finance Corporation
- SEACOM**
- Coca-Cola Shanduka Beverages**: South Africa (PTY) Ltd
- bhpbilliton**
- NATIONAL HEALTH LABORATORY SERVICE**
- Compensation Fund**: WORKING FOR YOU
- Joburg**: a world class African city
- City Power**: Johannesburg
- ALEXANDERFORBES**
- ANGLOGOLD ASHANTI**
- ARMSCOR**: Armaments Corporation of South Africa SOC Ltd
- LIBERTY LIFE**
- xstrata**
- harel mallac group**
- Discovery**
- ArcelorMittal**

FeverTree has four main industry practices and provide insight that enables our clients to deliver results that are measurable and sustainable



A focus on long term sustainability of results driven and owned by client members differentiates ourselves from other consulting companies